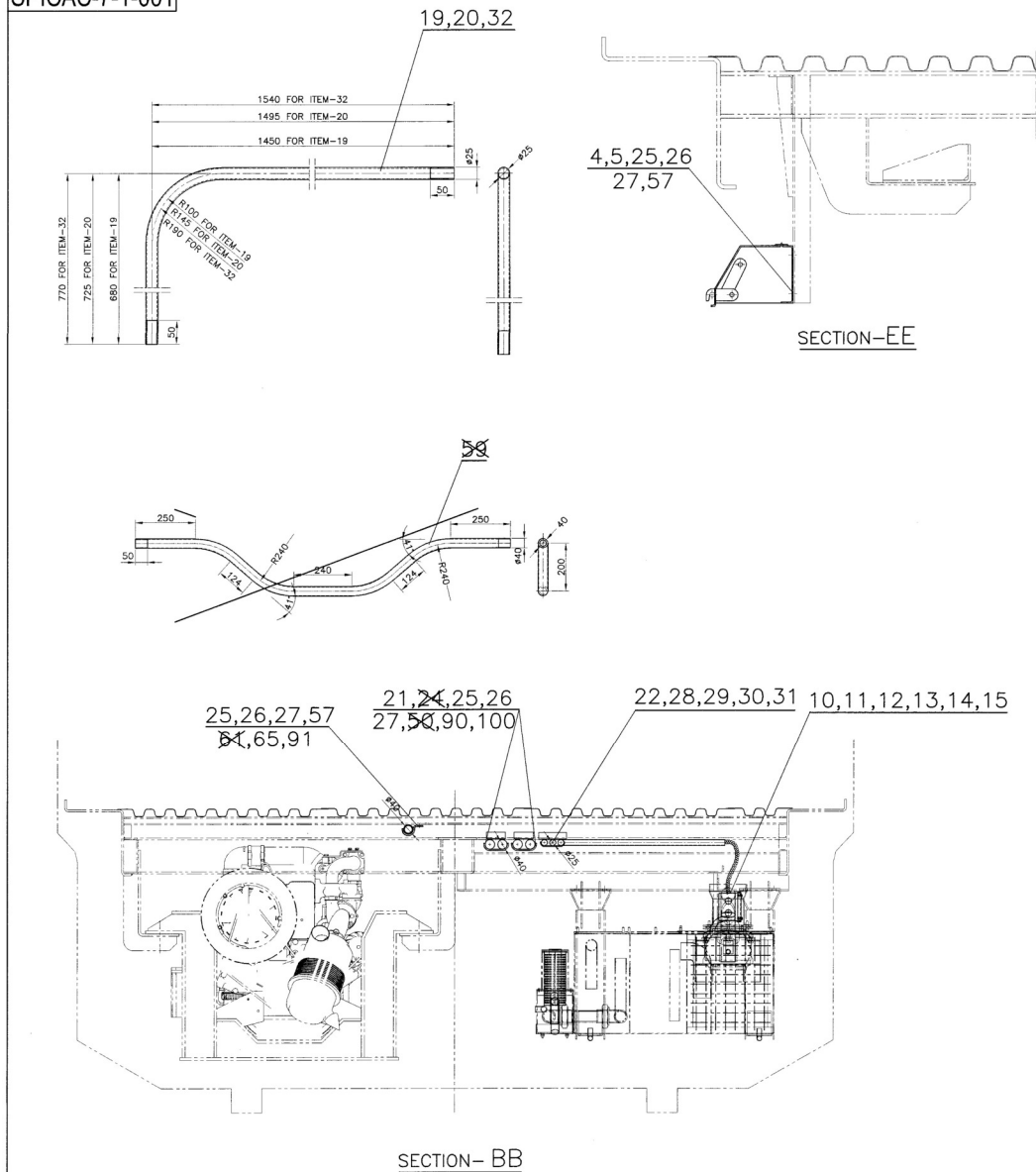


# SPICAC-7-1-001



## NOTE:-

- THE FOLLOWING EQUIPMENTS SHALL BE EARTHED USING OF ITEMS-46 TO 49.
  - TRACTION ALTERNATOR ----- 1x2 Nos.
  - TRACTION MOTOR JB ----- 2x2 Nos.
  - BOGIE BODY EARTHING ----- 2x2 Nos.
  - MONO BLOCK PUMP ----- 1x2 Nos.
  - BATTERY CHARGER ----- 1x2 Nos.
  - DA SET ----- 1x2 Nos.
- SUITABLE CUTAWAY SHOULD BE MADE AT SITE IN THE TRAY/TRAY COVER AND CABLE BOXES FOR TAKING CABLES TO EQUIPMENTS.
- ITEM-10 SHALL BE SUITABLY WELDED AT SITE FOR SECURING ITEMS-34 & 35 USING ITEMS-30 & 39 RESPECTIVELY WITH ITEMS-41 TO-44.
- (a) CABLE JACKETS SHALL BE USED TO PROTECT THE AREA OF CABLES WHICH ARE NOT PASSING THROUGH FLEXIBLE CONDUIT OR RIGID CONDUIT.
  - WHEREVER DIFFERENT POLARITY CABLES ARE PASSING THROUGH JUNCTION BOXES & SHORT DISTANCE IN SAME CONDUITS/FLEXIBLE CONDUITS. ALL THE CABLES SHALL BE PROTECTED WITH CABLE JACKETS FOR THE ENTIRE LENGTH.
- STIFFENER ROD SHALL BE SUITABLY CUT, BEND & WELDED AT SITE FOR SUPPORTING FLEXIBLE CONDUITS.
- (a) ALUMINIUM ALLOY CONDUITS DIFFERENT DIAMETER SHALL HAVE 2mm WALL THICKNESS OF THREADABLE QUALITY TO DESIGNATION 63400 OF TABLE-1 & CONDITION T6(NEW) OF THREADABLE QUALITY TO DESIGNATION 63400 OF TABLE-1 & CONDITION T6(NEW) OR WP(OLD) OF TABLE-2 TO IS:1285(LATEST) SUITABLE FOR ELECTRICAL WIRING. DIMENSIONS CONFIRMING TO CLAUSE 7 OF IS:9537 LATEST PART-II.
  - BOTH ENDS OF THE CONDUITS TO BE THREADED 50mm LENGTH.
  - ALUMINIUM ALLOY THREADABLE QUALITY HEX. LOCK NUT & COUPLER TO IS:1285(LATEST) WITH DESIGNATION 63400 CONDITION T6(NEW) OF TABLE-2 WITH IS:14768 PART-1 CLAUSE 6.3.3 (MEDIUM MECHANICAL STRESSES), CLAUSE 6 TABLE-1 S.NO.(v) FOR TEMPERATURE CLASSIFICATION, CLAUSE 6.8.1.4 (PROTECTION AGAINST DUST) & CLAUSE 6.9.3 (WITH DECLARED TENSILE STRENGTH FOR 10 KG LOAD) & DIMENSIONS TO TAB.6 OF IS:3837-(LATEST) FOR HEX. LOCK NUT, IS:14768 PART-2(LATEST) FOR COUPLER.
- ITEM-52 SHALL BE USED FOR LOWERING BRACKETS OF MC BOXES-1 & 2 TO AVOID CABLE STRAIN.
- ALL WELDED SURFACE SHALL BE PROPERLY DRESSED & PAINTED USING AEROSOL SPRAY PAINT OF MATCHING COLOUR INCLUDING STIFFENERS, CONDUIT CLAMPING ARRANGEMENT, SUPPORTING ANGLE & CLAMPS (EXCLUDING HARDWARE).
- ITEMS-73 TO 78 SHALL BE USED FOR EARTHING OF PRECOOLING SOCKET BOX AND ITS CONDUITS.
- ITEM-87 (UL NO.31711236) SUITABLY LOCATED AND WELDED AT SITE. ITEM NEED NOT BE PLANNED FOR PROCUREMENT AS EXCESS STOCKS AVAILABLE.

ITEM No.	FROM	TO	QTY	ITEM No.	FROM	TO	QTY
21	6	24	1	16	4	9	1
22	12	26	1	24	6	40	1
23	4	8	1	25	16	72	1
28	20	42	1	26	16	72	1
29	20	82	1	27	16	72	1
30	20	82	1	46	18	20	1
31	20	82	1	47	18	20	1
56	1	2	1	48	18	20	1
65	10	28	1	49	18	20	1
				57	14	22	1
				64	10	25	1
				66	3	2	1

ITEM No.	FROM	TO	QTY	ITEM No.	FROM	TO	QTY
10	7	21	1	10	7	21	1
11	7	21	1	11	7	21	1
12	7	21	1	12	7	21	1
13	7	21	1	13	7	21	1
14	7	21	1	14	7	21	1
15	7	21	1	15	7	21	1
16	7	21	1	16	7	21	1
17	7	21	1	17	7	21	1
18	7	21	1	18	7	21	1
19	7	21	1	19	7	21	1
20	7	21	1	20	7	21	1
21	7	21	1	21	7	21	1
22	7	21	1	22	7	21	1
23	7	21	1	23	7	21	1
24	7	21	1	24	7	21	1
25	7	21	1	25	7	21	1
26	7	21	1	26	7	21	1
27	7	21	1	27	7	21	1
28	7	21	1	28	7	21	1
29	7	21	1	29	7	21	1
30	7	21	1	30	7	21	1
31	7	21	1	31	7	21	1
32	7	21	1	32	7	21	1
33	7	21	1	33	7	21	1
34	7	21	1	34	7	21	1
35	7	21	1	35	7	21	1
36	7	21	1	36	7	21	1
37	7	21	1	37	7	21	1
38	7	21	1	38	7	21	1
39	7	21	1	39	7	21	1
40	7	21	1	40	7	21	1
41	7	21	1	41	7	21	1
42	7	21	1	42	7	21	1
43	7	21	1	43	7	21	1
44	7	21	1	44	7	21	1
45	7	21	1	45	7	21	1
46	7	21	1	46	7	21	1
47	7	21	1	47	7	21	1
48	7	21	1	48	7	21	1
49	7	21	1	49	7	21	1
50	7	21	1	50	7	21	1
51	7	21	1	51	7	21	1
52	7	21	1	52	7	21	1
53	7	21	1	53	7	21	1
54	7	21	1	54	7	21	1
55	7	21	1	55	7	21	1
56	7	21	1	56	7	21	1
57	7	21	1	57	7	21	1
58	7	21	1	58	7	21	1
59	7	21	1	59	7	21	1
60	7	21	1	60	7	21	1
61	7	21	1	61	7	21	1
62	7	21	1	62	7	21	1
63	7	21	1	63	7	21	1
64	7	21	1	64	7	21	1
65	7	21	1	65	7	21	1
66	7	21	1	66	7	21	1
67	7	21	1	67	7	21	1
68	7	21	1	68	7	21	1
69	7	21	1	69	7	21	1
70	7	21	1	70	7	21	1
71	7	21	1	71	7	21	1
72	7	21	1	72	7	21	1
73	7	21	1	73	7	21	1
74	7	21	1	74	7	21	1
75	7	21	1	75	7	21	1
76	7	21	1	76	7	21	1
77	7	21	1	77	7	21	1
78	7	21	1	78	7	21	1
79	7	21	1	79	7	21	1
80	7	21	1	80	7	21	1
81	7	21	1	81	7	21	1
82	7	21	1	82	7	21	1
83	7	21	1	83	7	21	1
84	7	21	1	84	7	21	1
85	7	21	1	85	7	21	1
86	7	21	1	86	7	21	1
87	7	21	1	87	7	21	1
88	7	21	1	88	7	21	1
89	7	21	1	89	7	21	1
90	7	21	1	90	7	21	1
91	7	21	1	91	7	21	1
92	7	21	1	92	7	21	1
93	7	21	1	93	7	21	1
94	7	21	1	94	7	21	1
95	7	21	1	95	7	21	1
96	7	21	1	96	7	21	1
97	7	21	1	97	7	21	1
98	7	21	1	98	7	21	1
99	7	21	1	99	7	21	1
100	7	21	1	100	7	21	1

COL- I ⇒ CONTRACTOR'S SCOPE OF SUPPLY.  
COL- II ⇒ ICF SCOPE OF SUPPLY.

SPICAC-9-0-002

ASSEMBLY DRAWINGS

27-10-2021

10-10-2018

ALT

DATE OF LATEST ISSUE

DY CEE/D-1

800

INDIAN RAILWAY STANDARDS

SHEET 2 OF 2

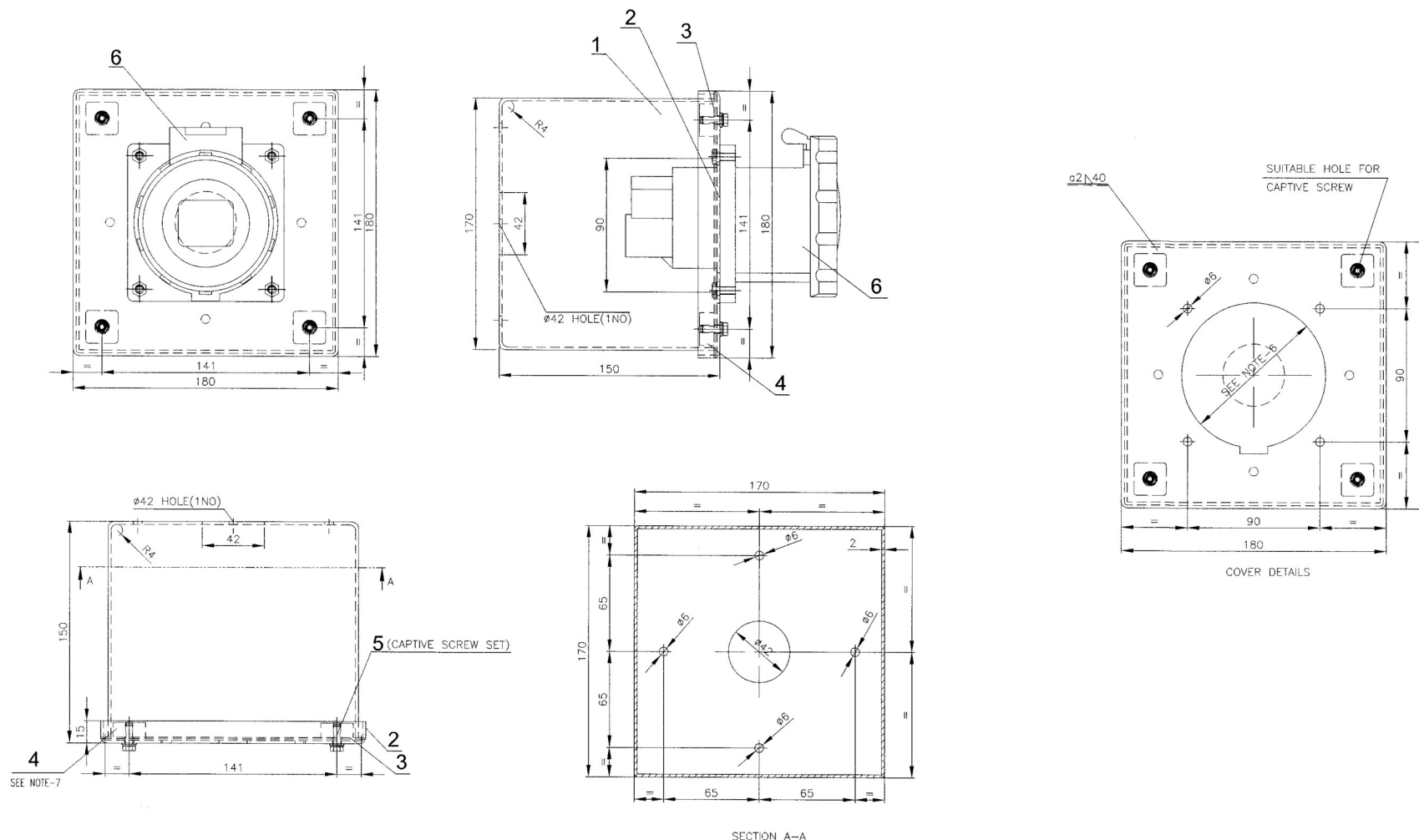
ARRGT. OF UNDERFRAME

WIRING FOR SPICAC COACH

CAO FILE : ED-CAD\800 7-1-0012SC00.DWG

INTEGRAL COACH FACTORY CHENNAI-38

SPICAC-7-1-001



SECTION A-A

## NOTE:-

- 1) MATERIAL FOR STAINLESS STEEL BOX ASSLY SHALL BE AISI 304.
- 2) THE COMPLETE ASSLY SHALL BE POWDER COATED TO SPECN. ICF/MD/SPEC/091 WITH MINIMUM THICKNESS OF 50 MICRONS TO COLOUR BLACK PURE EPOXY MATT FINISH TO SHADE CARD No. RAL 9004(SIGNAL BLACK).
- 3) THE FIRST TIME SUPPLIER FIRM HAS TO SUBMIT COMPLETE DRAWING WITH DETAILED BOM FOR ICF APPROVAL.
- 4) THE FIRM HAS TO DESIGN THE BOX AND MANUFACTURE AS PER THE ICF APPROVED DRAWING ONLY.
- 5) THE FIRST TIME SUPPLIER FIRM HAS TO SUBMIT ONE PROTOTYPE SAMPLE TO ICF FOR APPROVAL BEFORE COMMENCING BULK MANUFACTURING.
- 6) SUITABLE CUTAWAY & MOUNTING HOLES SHALL BE DONE ON THE BOX COVER FOR ACCOMADATING THE SOCKET ASSEMBLY.ONLY SS HARDWARES SHALL BE USED FOR FITMENT OF SOCKET ON BOX COVER.
- 7) ITEM-4 SHALL BE SUITABLY LOCATED ON BOX & WELDED TO SUIT THE CAPTIVE SCREW LENGTH.

## ASSEMBLY DRAWINGS

08-11-2021 29-08-2018

DY.CEE/D I

ALT.

DATE OF LATEST ALTN

DATE OF FIRST ISSUE

DY.CEE/D I

NO.	OFF	DESCRIPTION & DIMENSIONS	ITEM	REF.DRGS.	MAT. SPEC.	WEIGHT/UNIT
1		EXTERNAL SUPPLY SOCKET 125A,415V,Ø67.5F(ØP+N+E)WITH PILOT CONTACTS	6	1948036/ UNV4125-6		M/S GARO OR EQUIVALENT MAKE
4		CAPTIVE SCREW MS WITH SUITABLE CIRCLE CLIP ARGUMENT	5		AISI 304	STAINLESS STEEL
4		SCREWING BOSS 22x22(t=10mm)	4		AISI 304	STAINLESS STEEL
1		EPDM RUBBER GASKET (t=2mm)	3			
1		COVER 180x180x15 (t=2mm)	2		AISI 304	STAINLESS STEEL
1		JUNCTION BOX 170x170x150(t=2mm)	1		AISI 304	STAINLESS STEEL
NO. OFF DESCRIPTION & DIMENSIONS ITEM REF.DRGS. MAT. SPEC. WEIGHT/UNIT						
GROUP:- 7-1						
SUPERSEDED BY:						
SCALE 1:2						
CHD						
ALT. P.SREE SHALVEENA						
DRN S P SAHU						
ALT. 0						
INTEGRAL COACH FACTORY CHENNAI-38						
CAD FILE: ED-CAD\329\7-1-104-SA00.DWG						
DATA CODE No. 329						
INDIAN RAILWAY STANDARDS						
SHEET 1 OF 1						

ICF/SK3- 7-1-104

**Pre-Qualification requirements**

**EXTERNAL SUPPLY SOCKETS SUITABLE FOR UNDERFRAME MOUNTING FOR SPIC/ KMMC**

<b>S. No.</b>	<b>Description of requirement</b>	<b>Document to be attached</b>
1	Quoted Items SL NO.	Mention SI No.
2	Bidder should submit a self-declaration stating that, "Offered item is same as per enquiry and there is no deviation".	Self-declaration on letterhead of firm.
3	Bidder should have supplied minimum one set. of same item (External supply socket for RMPU precooling for SPIC) or similar item to any Public sector undertaking/ Central Gov. sector/Private sector/Indian Railways` working for rolling stock application.	PO and Invoice copy.

**Terms Other than PQR to be compiled during Bidding:**

<b>Terms</b>	<b>Complied/Not Complied</b>
Quoted SL NO.	
Delivery accepted as per Tender	
Mobile no of concerned Person	
Email ID	

Note: Bidders providing above documents and not meeting above criteria essential for Offer Consideration.

**NO DEVIATION CERTIFICATE**

**Reference:** Bid No. \_\_\_\_\_ Dated: \_\_\_\_\_

**Subject:** Self-Declaration for No Deviation

This is to certify that the items/services offered by us against the above-referred enquiry are **fully compliant** with the specifications, terms, and conditions mentioned in the bid document.

We hereby confirm that **there are no deviations** from the stipulated specifications, commercial terms, conditions, and other requirements of the enquiry.

For \_\_\_\_\_  
(Authorized Signatory)

Date: \_\_\_\_\_

Seal: